

Affordable. Reliable. Easy to install.



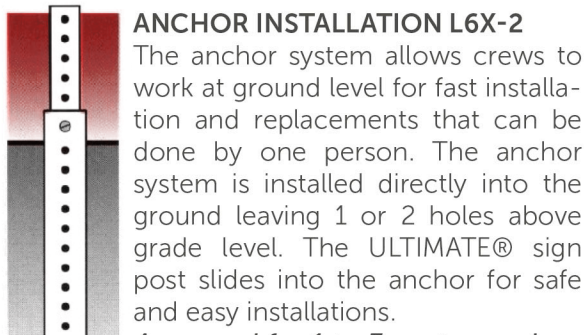
- Galvanized square post and anchor post
- **On vehicle impact this square post will giveaway and not bend, allowing a better safety for drivers.**
- Provides four flat surfaces for mounting signs in any direction and at any height without the need for additional hardware.
- Square tube sections provide superior resistance to wind and other forces over U-channel or round posts.

APPROVED INSTALLATIONS



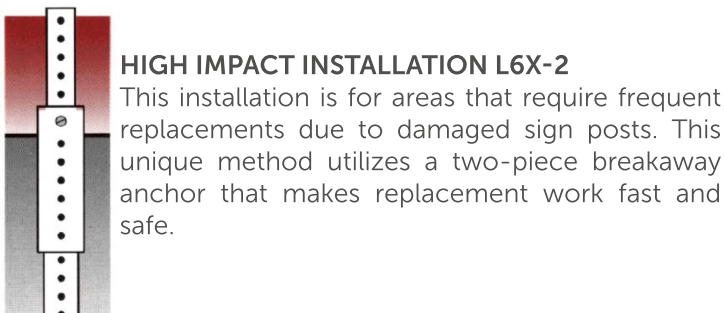
DIRECT INSTALLATION L6X-1

The square post can be installed directly into the ground using power equipment or a sledgehammer with driving cap.
Approved for 1 to 2 posts per sign.



ANCHOR INSTALLATION L6X-2

The anchor system allows crews to work at ground level for fast installation and replacements that can be done by one person. The anchor system is installed directly into the ground leaving 1 or 2 holes above grade level. The ULTIMATE® sign post slides into the anchor for safe and easy installations.
Approved for 1 to 3 posts per sign.



HIGH IMPACT INSTALLATION L6X-2

This installation is for areas that require frequent replacements due to damaged sign posts. This unique method utilizes a two-piece breakaway anchor that makes replacement work fast and safe.



IN CANADA

MTQ APPROVED
HOM-6310-101

MTO COMPLIANT

EQUIVALENT TO
TELESPAR

IN THE U.S.

FHWA APPROVED

COMPLIANT
NCHRP350

SAFER ROADS • BRIGHTER SOLUTIONS

WWW.CANADIANTRAFFICSUPPLY.CA | INFO@CANADIANTRAFFICSUPPLY.CA



PRODUCT CODES

PTC SQUARE POST	200 TUBE SIZE 2"X2"	08 HEIGHT 8'
PTC175	1 3/4" x 1 3/4"	
Height : 7' à 14'		
PTC200	2" x 2"	
Height : 3' à 16'		
PTC225	2 1/4" x 2 1/4"	
Height : 3' à 16'		

Why use an anchor during installation?

This system is for areas that require frequent replacements due to damaged sign posts.

The post is installed at the top portion of the anchor [by sliding the post inside the anchor] allowing crews to work at ground level.

The **ULTIMATE®** post system is compatible with all existing square posts.

Benefits

- Doubles the thickness of the post
- Reinforces the post, preventing it from bending on impact.
- Safe and easy installations.

ACCESSORIES



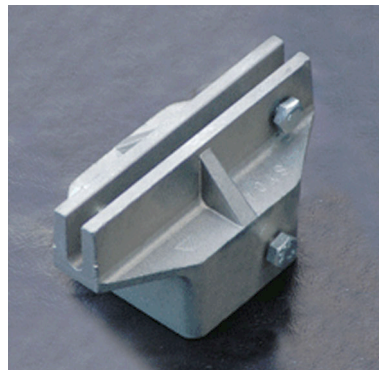
Zinc accessory kits include :
1x 90° angle bolt and 1x 3/16" nut

AE6091

for 1 1/2" to 2" square posts

AE6091A

for 2" to 2 1/2" square posts



Signage installation accessory

SU-33

for 1 3/4" square posts



Accessory kits include :

1x bolt, 1x 5/16" -18 nut and 2x rings

AE6018J

for 1 1/2" and 1 3/4" square posts

AE6018K

for 2 1/4" and 2 1/2" square posts

SAFER ROADS • BRIGHTER SOLUTIONS

WWW.CANADIANTRAFFICSUPPLY.CA | INFO@CANADIANTRAFFICSUPPLY.CA